

Realtek
RTL8761A Bluetooth Chip
Simple
Efuse PG Tool
BTOnlyEfuseTool
User Manual

Realtek

Draft v0.1
2016/12/14

Revision History

Date	Version	
2016/12/14	Draft v0.1	Initail

Real tek

Catalog

Revision History 2

1.	Overview	4
2.	Device Interface of RTL8761AU Device	4
3.	Operating Page	5
4.	Set Page	5

Figure List

Figure 1 open RTL8761A Device	4
Figure 2 Check COM port	4
Figure 3 Operating Page	5
Figure 4 Set Page	5

Real tek

1. Overview

This document is used to introduce efuse PG tool “BTOOnlyEfuseTool” for Realtek **RTL8761A** Bluetooth chip series. Customers should comply with the steps and requirements under this document.

Before use this tool, PC should direct connected **UART/USB port**. The connection between Bluetooth and HOST chip must be cut off.

2. Device Interface of RTL8761AU Device

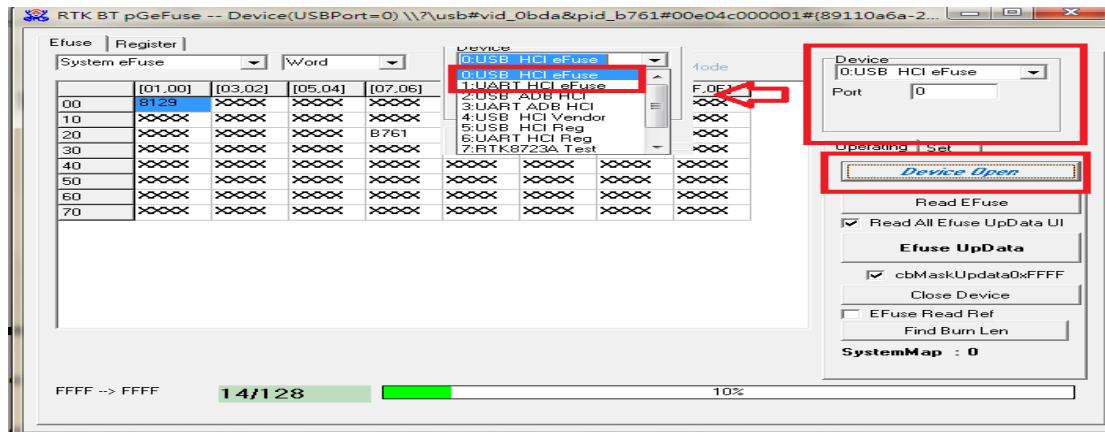


Figure 1 open RTL8761A Device

Step 1: Select correct interface.

- USB : If the module interface is “USB”, please select “0:USB HCI eFuse” and “Port =1” to Open.
- UART: If the module interface is UART, please select “1:UART HCI eFuse” and check COM port number in Device Manager. “BTOOnlyEfuseTool” only supports COM port number is smaller than “10”. If COM port number is larger than “10”, open operation will fail.

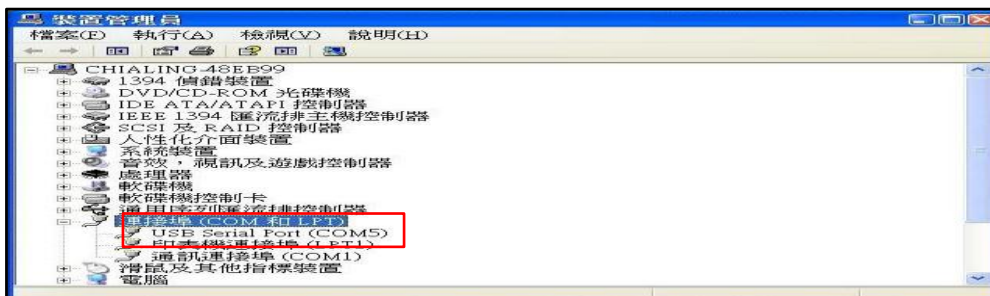


Figure 2 Check COM port number

2.1 Operating Page

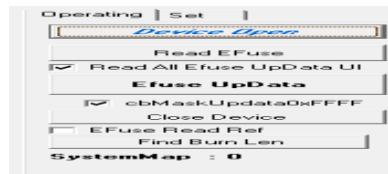


Figure 3 Operating Page

(A) Click “Device Open” to open Device.

To Click clicking “Device Open” button, the button static progress line changes to green means device open is successful.

(B) Click “Device Close” to Close the Device.

Clicking “Device Close” button, the button static progress line changes to Red.

(C) Click “Read Efuse” to read efuse from Device.

(D) Click “Efuse Updata” to program efuse of Device.

2.2 Set Page

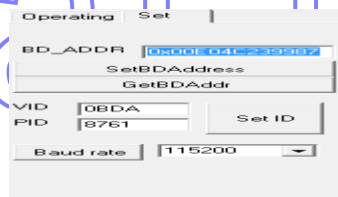


Figure 4 Set Page

(A) BD_ADDR

To setting the BD_Address in BT Efuse Bank.

BT Bank	Efuse start offset	Length	Default Value
BT Efuse	0x3C	6 Byte	0x00E04C239987

(B) VID/PID

To setting the BD_Address in BT Efuse Bank.

Item	BT Bank	Efuse start offset	Length	Default Value
VID	system Efuse	0x24	2 Byte	0x0bda
PID	system Efuse	0x26	2 Byte	0xb761

Last to click the “Efuse Updata” of “Operating Page”.